

103 203 303

Zakaki, Limassol

1 bedroom apartment
Total area 48m²

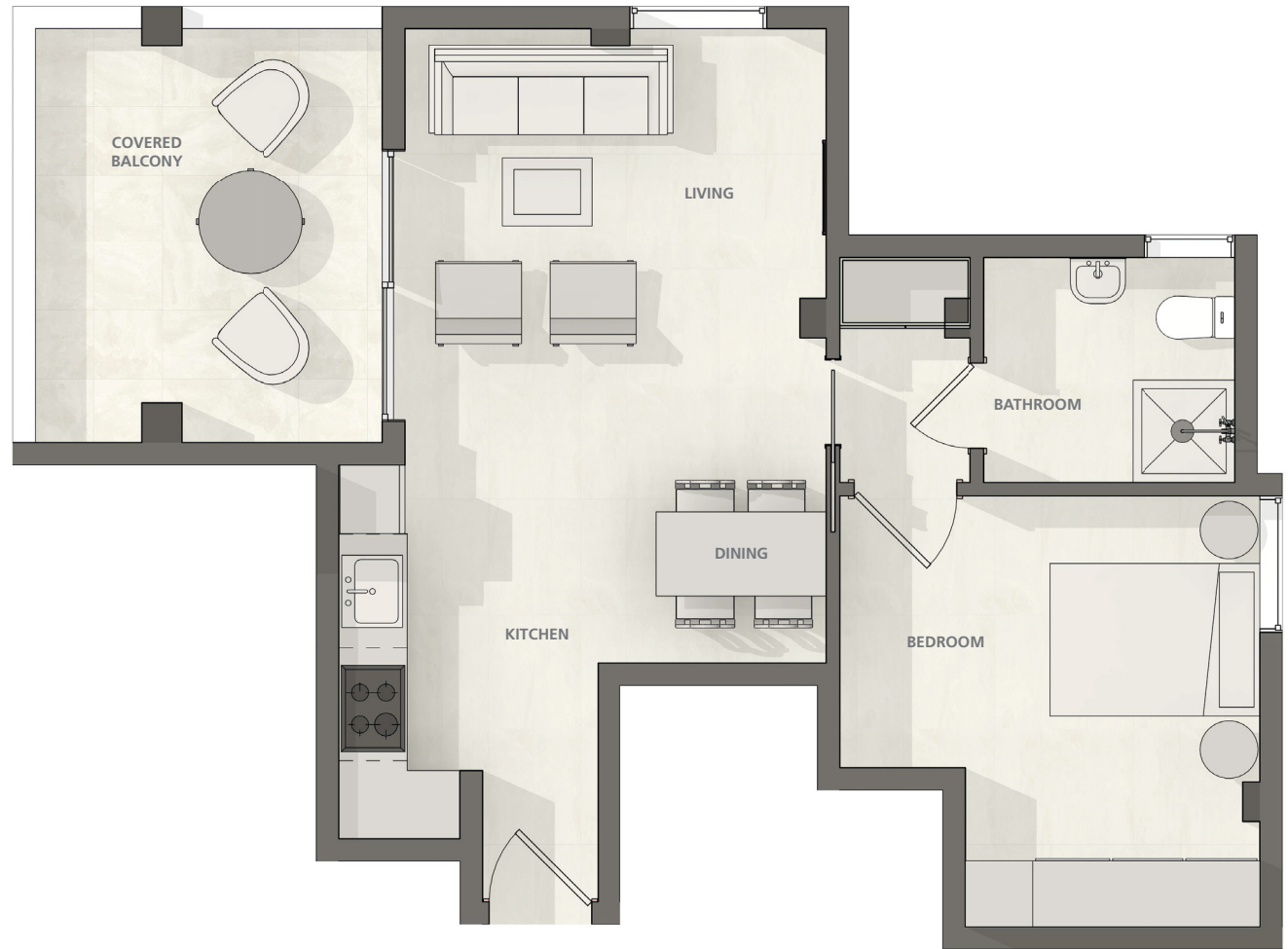
Living, dining, kitchen 3.7m x 6.5m

Bedroom 3.8m x 3.7m

Bathroom 2.0m x 2.2m

Balcony 10m²

Measurements are at widest points. All measurements are approximate.



Homelink

SALES OFFICE

Homelink CY, 132a Griva Digeni, Limassol 3101
Tel +357 700 700 19 info@homelinkcy.com homelinkcy.com

DISCLAIMER

Development images and computer generated images (CGI's) are indicative and may vary. Drawings and illustrations are not to scale and relate only to planning and construction stages which may not accurately reflect the completed scheme. Purchasers are advised to check plot specific dimensions, features and specifications prior to reservation. These particulars have been produced in good faith and are set out as a general guide and do not constitute the whole or part of any contract.

