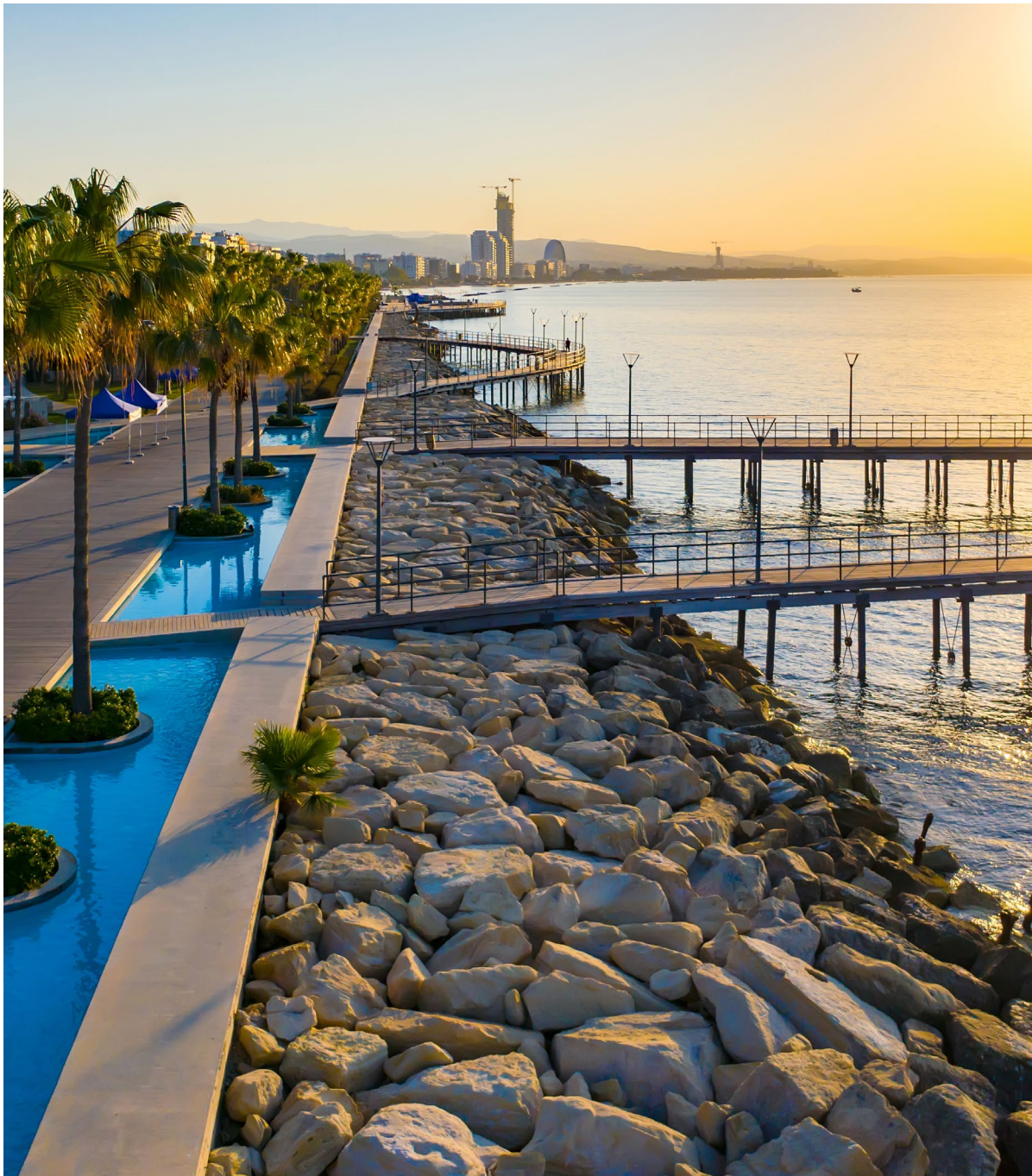


Zakaki
Limassol

Homelink

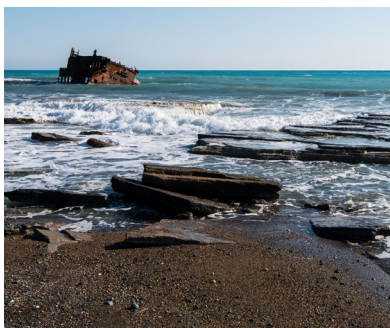
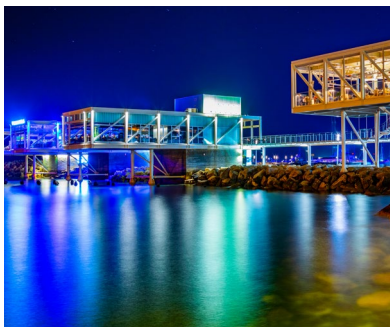
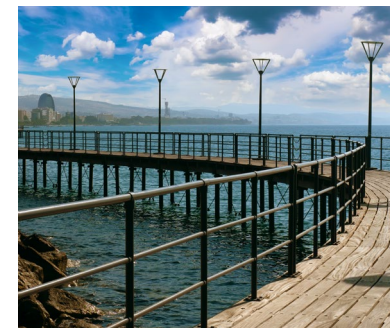


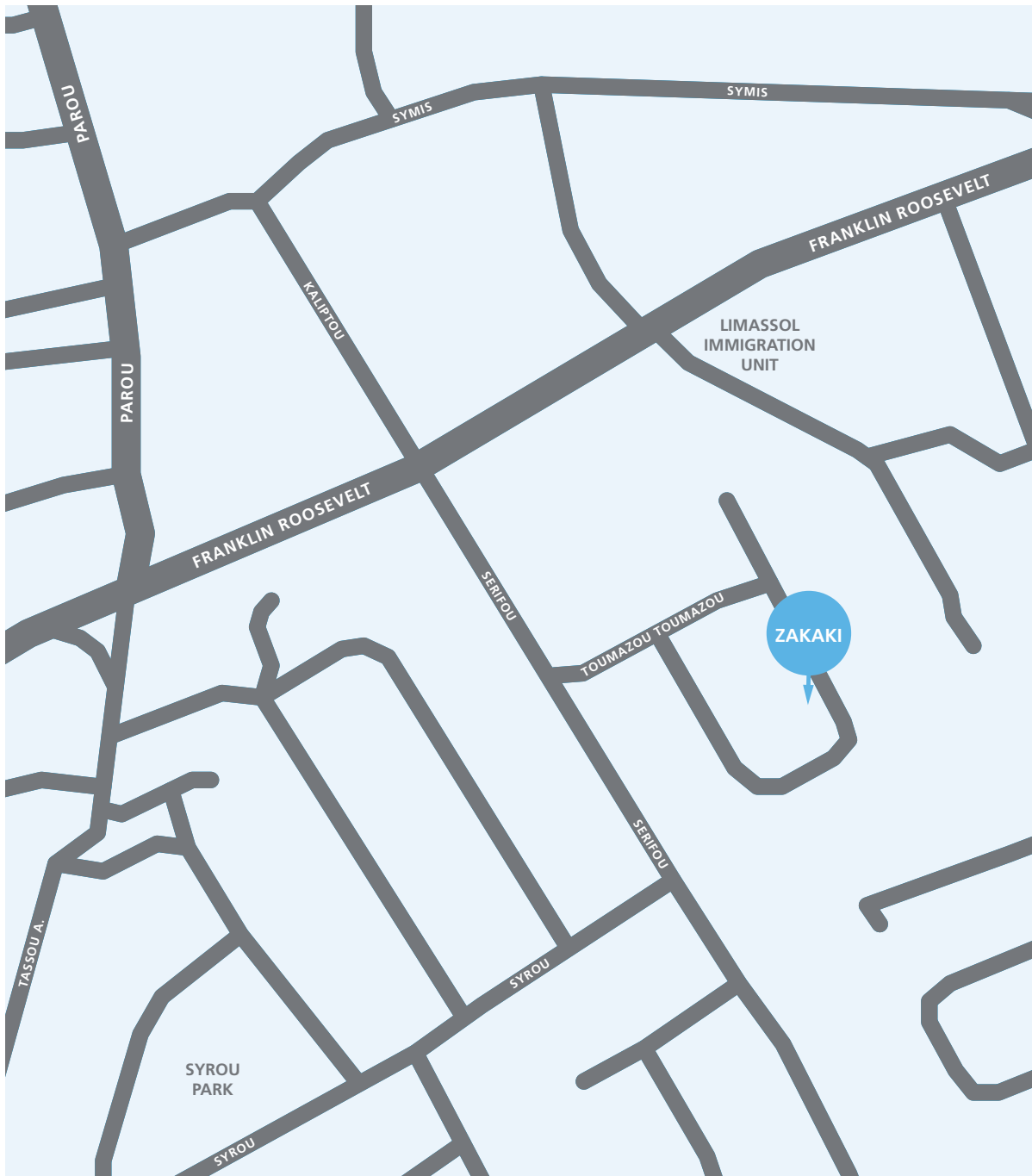
Zakaki, Limassol

Stylish one-bedroom apartments in the beautiful Zakaki neighbourhood of Limassol.

Summary	<ul style="list-style-type: none">- Residential conversion in a prime location in Limassol- Development set over ground and two upper floors- Nine private one bedroom apartments
Address	Roze Millex, Zakaki, Limassol
Method of Sale	The property will be offered for sale as a whole for investment purposes or individually.
Viewing Arrangements	Internal inspections can be arranged by appointment with Homelink CY.
Terms	The property is being marketed for sale on a private treaty basis, subject to contract.







Location

Affluent Zakaki is rapidly becoming the neighbourhood of choice for the wealthiest investors in Cyprus. Here, stunning private homes nestle amongst cypress groves and eucalyptus trees. Central Limassol is only a few minutes drive and the fabulous international shopping mall and designer village are close by. The C2 Limassol casino, restaurants, bars and cafes are within easy reach and leisure facilities include an 18-hole golf course.





Development

This contemporary low-rise development features nine architect designed one bedroom apartments, located in the heart of Zakaki.

Each home provides an abundance of light and privacy, with superb open living space. Balconies are double aspect and generously sized. Kitchens are fitted with high quality appliances and bathrooms feature luxury finishes and the finest fittings.

Each apartment comes with allocated covered parking within the grounds of the development.



Development

This contemporary low-rise development features nine architect designed one bedroom apartments, located in the heart of Zakaki.

Each home provides an abundance of light and privacy, with superb open living space. Balconies are double aspect and generously sized. Kitchens are fitted with high quality appliances and bathrooms feature luxury finishes and the finest fittings.

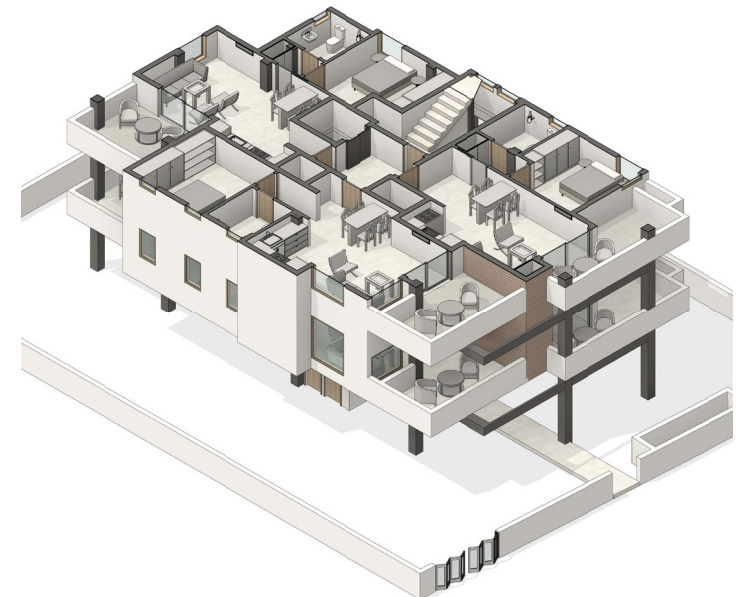
Each apartment comes with allocated covered parking within the grounds of the development.





First Floor Schedule of Accommodation

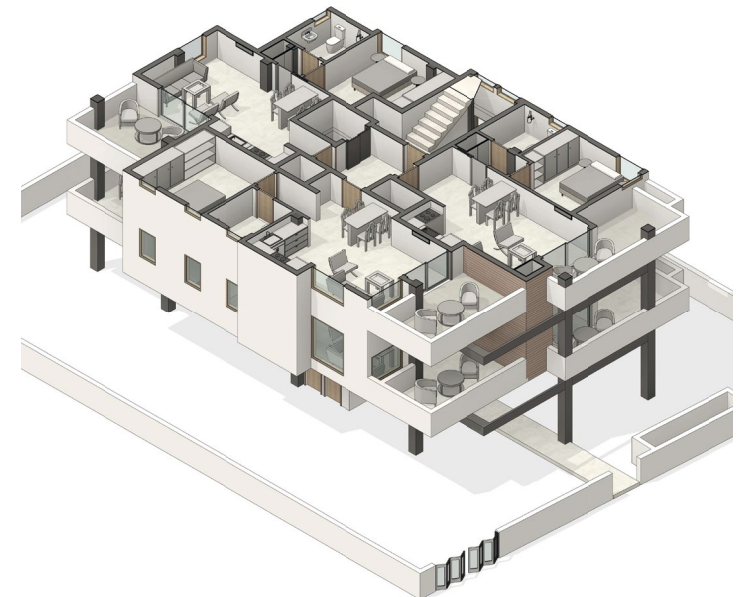
APARTMENT	FLOOR	BEDS	TOTAL SQ M
101	First	1	49
102	First	1	45
103	First	1	48





Second Floor Schedule of Accommodation

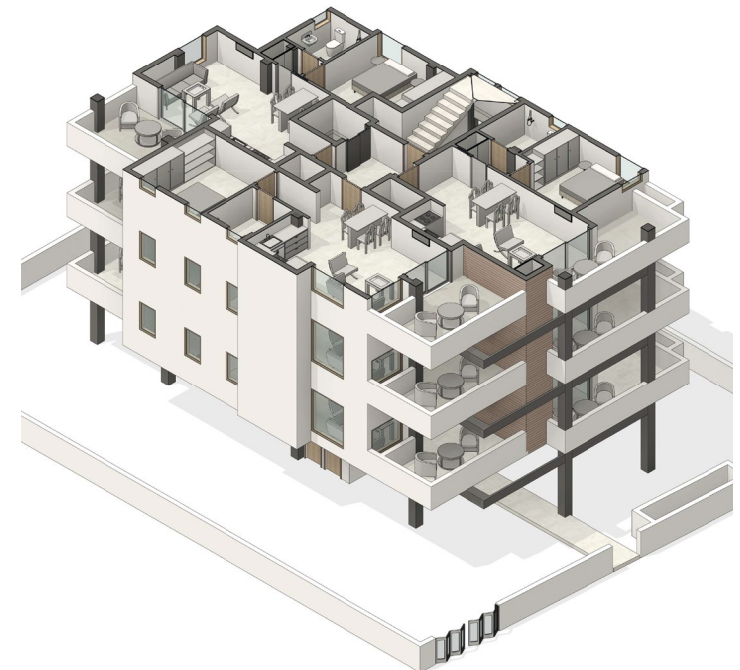
APARTMENT	FLOOR	BEDS	TOTAL SQ M
201	First	1	49
202	First	1	45
203	First	1	48





Third Floor Schedule of Accommodation

APARTMENT	FLOOR	BEDS	TOTAL SQ M
301	First	1	49
302	First	1	45
303	First	1	48







Zakaki, Limassol

1 bedroom apartment
Total area 49m²

Living, dining, kitchen 3.7m x 6.7m

Bedroom 3.5m x 3.6m

Bathroom 2.1m x 2.3m

Balcony 9m²

Measurements are at widest points. All measurements are approximate.



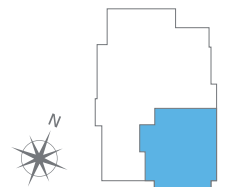
Homelink

SALES OFFICE

Homelink CY, 132a Griva Digeni, Limassol 3101
Tel +357 700 700 19 info@homelinkcy.com homelinkcy.com

DISCLAIMER

Development images and computer generated images (CGI's) are indicative and may vary. Drawings and illustrations are not to scale and relate only to planning and construction stages which may not accurately reflect the completed scheme. Purchasers are advised to check plot specific dimensions, features and specifications prior to reservation. These particulars have been produced in good faith and are set out as a general guide and do not constitute the whole or part of any contract.





Zakaki, Limassol

1 bedroom apartment
Total area 45m²

Living, dining, kitchen 5.0m x 5.4m

Bedroom 3.1m x 3.5m

Bathroom 2.0m x 2.2m

Balcony 12m²

Measurements are at widest points. All measurements are approximate.

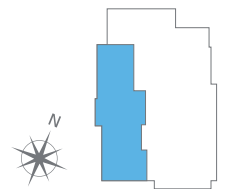
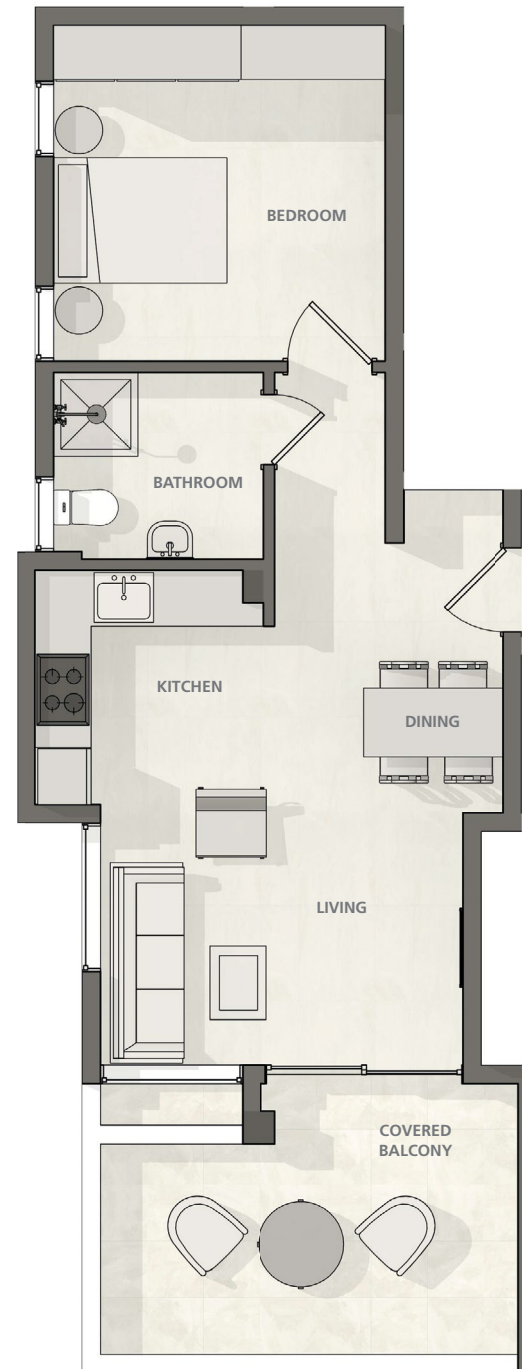
Homelink

SALES OFFICE

Homelink CY, 132a Griva Digeni, Limassol 3101
Tel +357 700 700 19 info@homelinkcy.com homelinkcy.com

DISCLAIMER

Development images and computer generated images (CGI's) are indicative and may vary. Drawings and illustrations are not to scale and relate only to planning and construction stages which may not accurately reflect the completed scheme. Purchasers are advised to check plot specific dimensions, features and specifications prior to reservation. These particulars have been produced in good faith and are set out as a general guide and do not constitute the whole or part of any contract.



103 203 303

Zakaki, Limassol

1 bedroom apartment
Total area 48m²

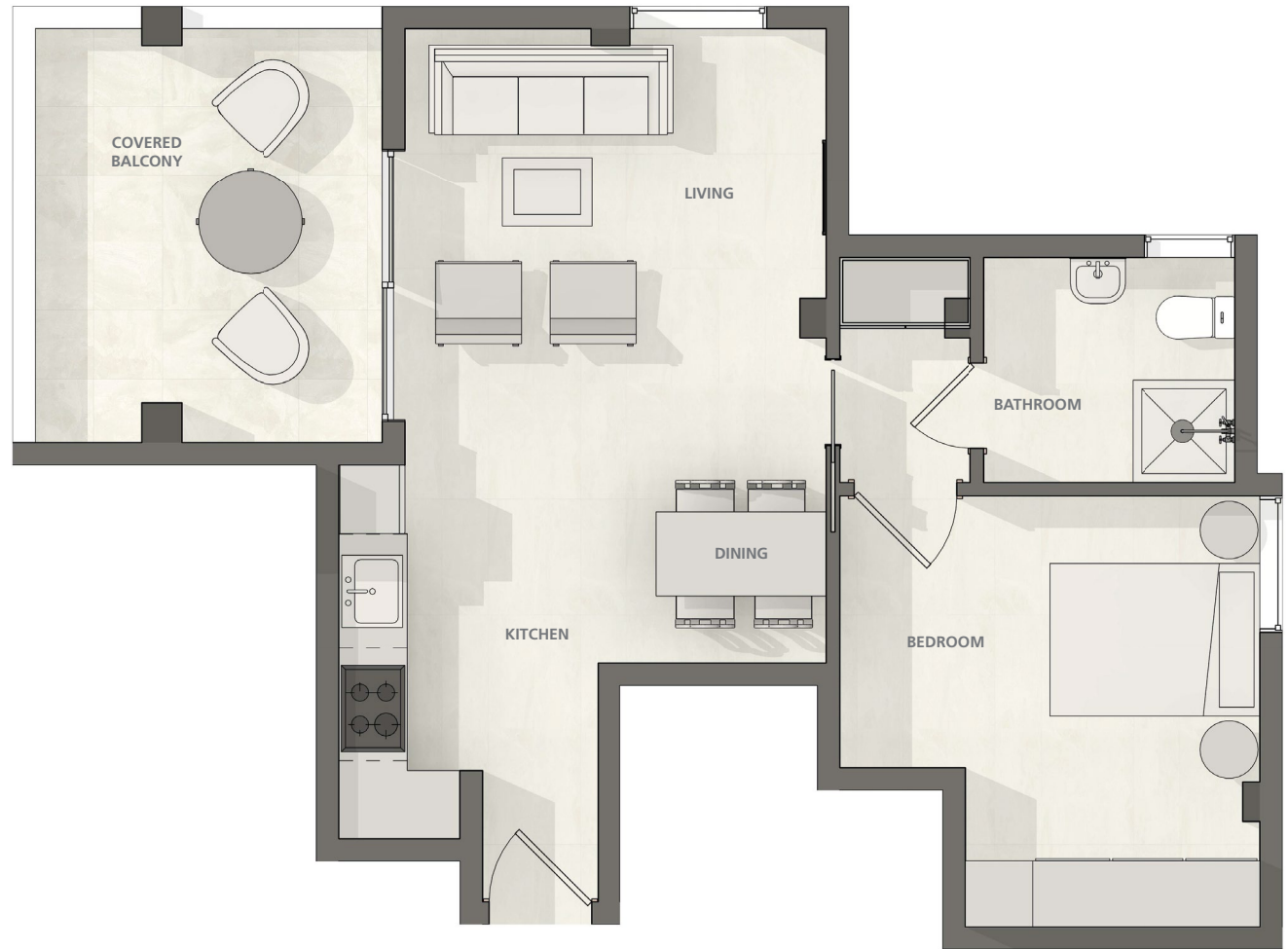
Living, dining, kitchen 3.7m x 6.5m

Bedroom 3.8m x 3.7m

Bathroom 2.0m x 2.2m

Balcony 10m²

Measurements are at widest points. All measurements are approximate.



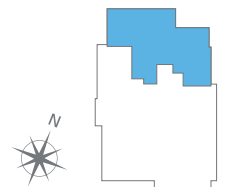
Homelink

SALES OFFICE

Homelink CY, 132a Griva Digeni, Limassol 3101
Tel +357 700 700 19 info@homelinkcy.com homelinkcy.com

DISCLAIMER

Development images and computer generated images (CGI's) are indicative and may vary. Drawings and illustrations are not to scale and relate only to planning and construction stages which may not accurately reflect the completed scheme. Purchasers are advised to check plot specific dimensions, features and specifications prior to reservation. These particulars have been produced in good faith and are set out as a general guide and do not constitute the whole or part of any contract.





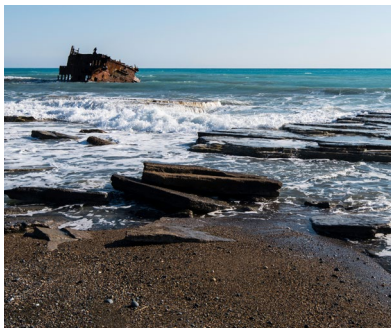
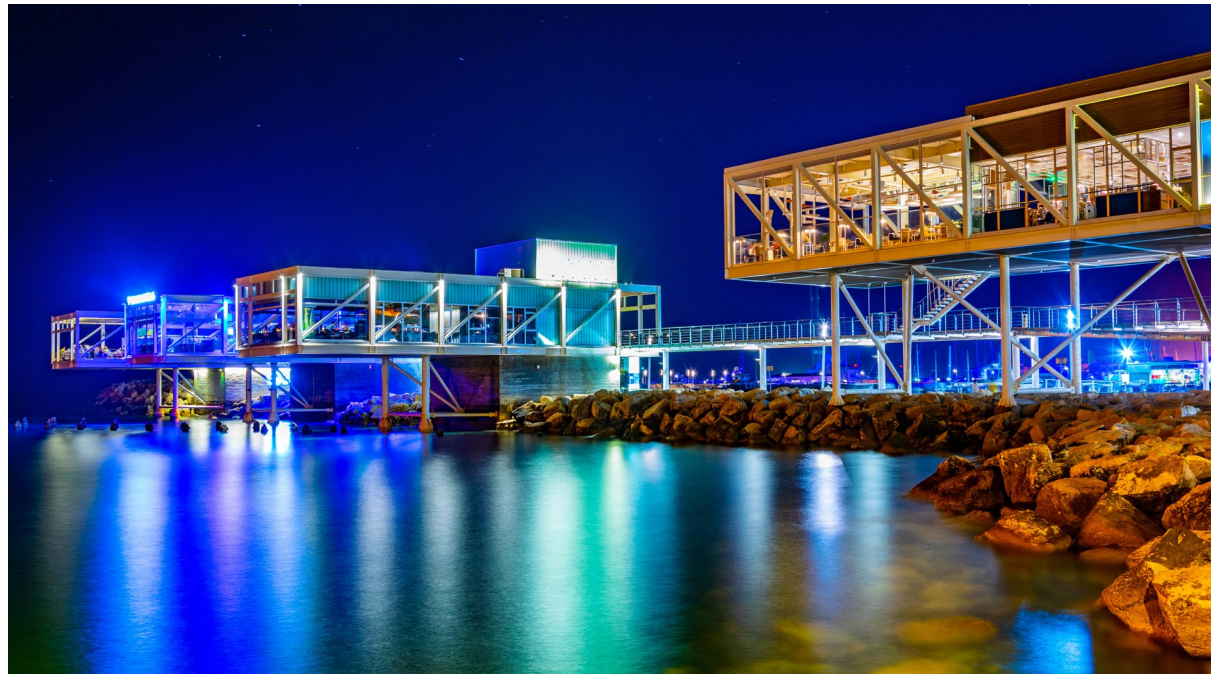
Specifications

DEVELOPMENT

Structure	<ul style="list-style-type: none">- Steel frame construction with highly insulated exterior walls- Lightweight concrete above the reinforced concrete slabs for sound and thermal insulation
Parking	<ul style="list-style-type: none">- One space per apartment
Other Specifications	<ul style="list-style-type: none">- A/C provision in all room- Double glazed and thermal insulation glass- Solar panels for heating water- Photovoltaic panels for electricity- Energy performance in accordance with current building regulations
Finishes	<ul style="list-style-type: none">- Aluminium external windows, doors and sliding doors- Ceramic floor tiles for verandas and roof garden (if any)- Parking with polished concrete finish

APARTMENTS

Living Room & Bedrooms	<ul style="list-style-type: none">- Ceramic tiles or laminate wooden flooring- Flush laminated doors- Floor to ceiling made to measure wardrobes
Kitchen	<ul style="list-style-type: none">- Designer made-to-measure kitchens- Kitchen cupboards made of high-quality laminate panels- Ceramic tiles or laminate wooden flooring- Granite or marble worktop with fitted appliances
Bathrooms	<ul style="list-style-type: none">- Floor to ceiling ceramic tiles- High-quality sanitary fittings, designed according to architectural specification- Wall or ceiling mounted shower with enclosure (where applicable)- Made-to-measure vanity unit with illuminated demister mirror cabinet- Wall mounted towel rail and toilet paper holder
Electrical & Audio Visual	<ul style="list-style-type: none">- Dimmable lighting control throughout- LED lighting throughout including balconies- Satellite system or cable TV installation- Telephone and data points in main rooms- USB points/ports- Electrical installation in accordance with the latest European standards- Smart home lighting and sound system (optional extra)



Further Details

Homelink CY
132a Griva Digeni
Limassol 3101

Tel +357 700 700 19
info@homelinkcy.com

homelinkcy.com